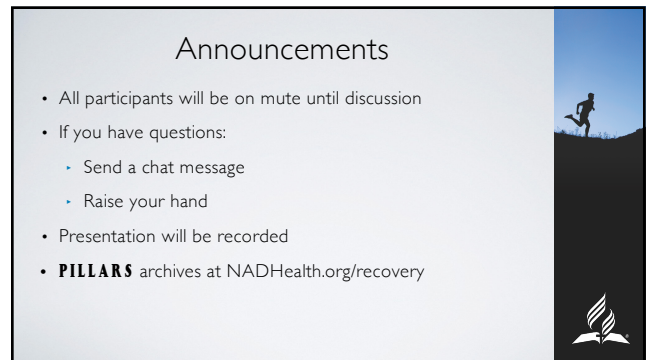




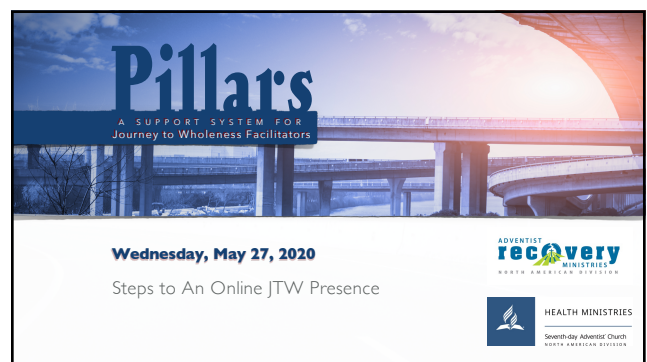
1



2



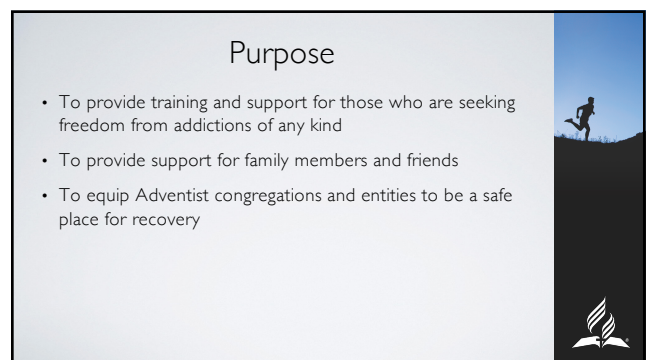
3



4



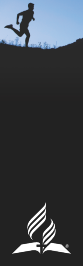
5



6

## Mission Statement

To share hope and wholeness, and freedom from addictions, through the healing power of Christ.



7

## What the Journey to Wholeness Program Can Do



8

## JTW Effects

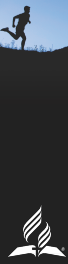
- Assist church members and non-members
- Remove character defects
- Develop Christ-like character
- Anyone can attend, including church members



9

## A Safe Environment

- Provide a safe place for healing
- Provide a safe place for individuals struggling specifically with addictions
- Provide a safe place of community members
- How can this be done in an online system?



10

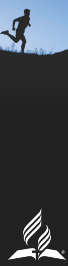
## Building the JTW Network



11

## Communication is Key

- Who is involved
  - You — the Facilitator
  - Your church leadership
  - Your regional ARMin Coordinator
  - Your Conference & Union health leaders
  - The NAD ARMin team



12

## Discussion

- Would an official church-level recognition or membership process be useful?

13

## By the Board

14

## Why Have Board Approval

- Liability coverage by Adventist Risk Management
- Provides stability to your JTW group
- Provides support and encouragement to your team
- Creates awareness in the church
- Facilitates awareness in the community
- Links the church with the community

15

## Zoom Access

16

## Zoom Platform

- Church-sponsored Zoom account
- Discounts available through NAD
  - Send email to [health@nadadventist.org](mailto:health@nadadventist.org)
- **Online listing of active groups**
- Training resources
  - Pillars meeting on April 23
  - [NADhealth.org/covid19/ministry](http://NADhealth.org/covid19/ministry)

17

## Berean Adventist Church

18

## Online Facilitator Training

Self-study Modules  
Live Modules



ADVENTIST  
**recovery**  
MINISTRIES

19

## Q&A

What questions do you have?  
What experiences have you had?



20

## Homework

[recovery@nadhealth.org](mailto:recovery@nadhealth.org)



21